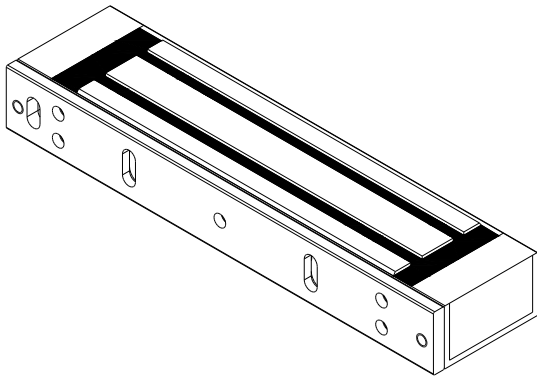


ELECTROMAGNETIC LOCK INSTALLATION INSTRUCTION

**Model:**

- SL-180 : Without door position detection output
- SL-180R:With door position detection output

Suitable for:

Out-swing door 、 drawer 、 dresser 、 locker 、 and etc.

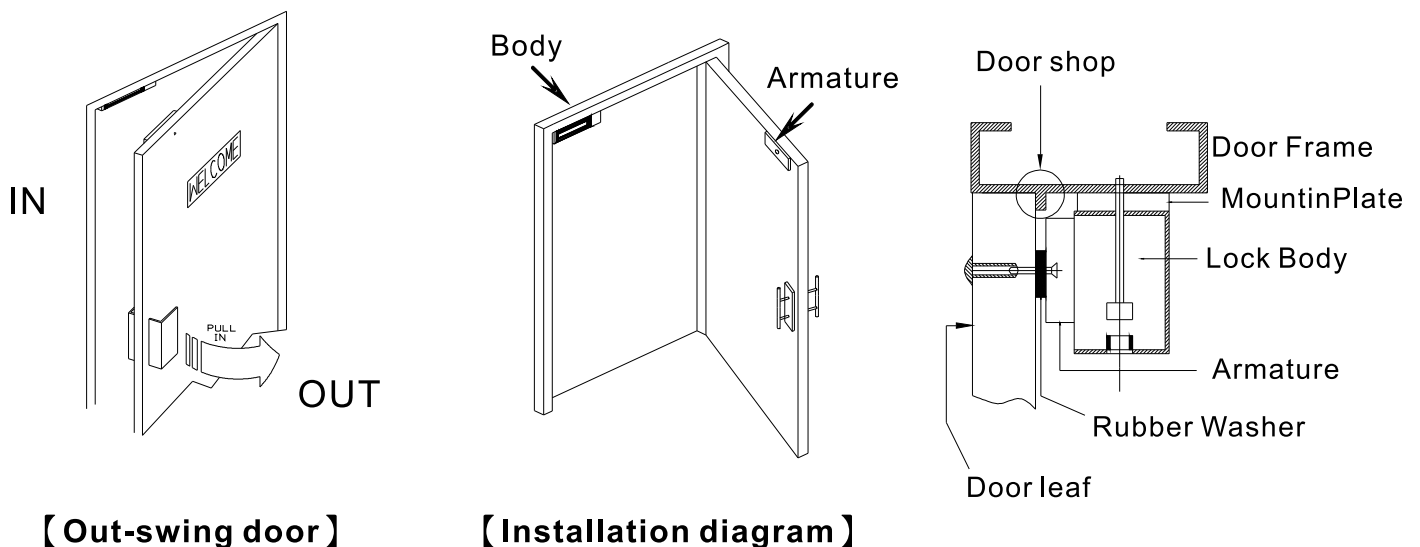
Dimensions:165X36X22.5(mm)

※ Specifications

	SL-180 Series	Note
Power supply	DC 12V/DC 24V	±15%
Operation current	380mA / 12VDC 190mA / 24VDC	±10%
Door sensor	N.C(Only for SL-180R model)(0.25A/30VDC)	Reed switch
Application	Out-swing door and In-swing door	
Holding force	300lbs(150Kg)	
Operation temperature	35 °C ± 5 °C (Normal temperature of 30 °C)	
Warranty	The warranty is 1 year under normal circumstances	
Weight	1kg	

※ Installation Instruction

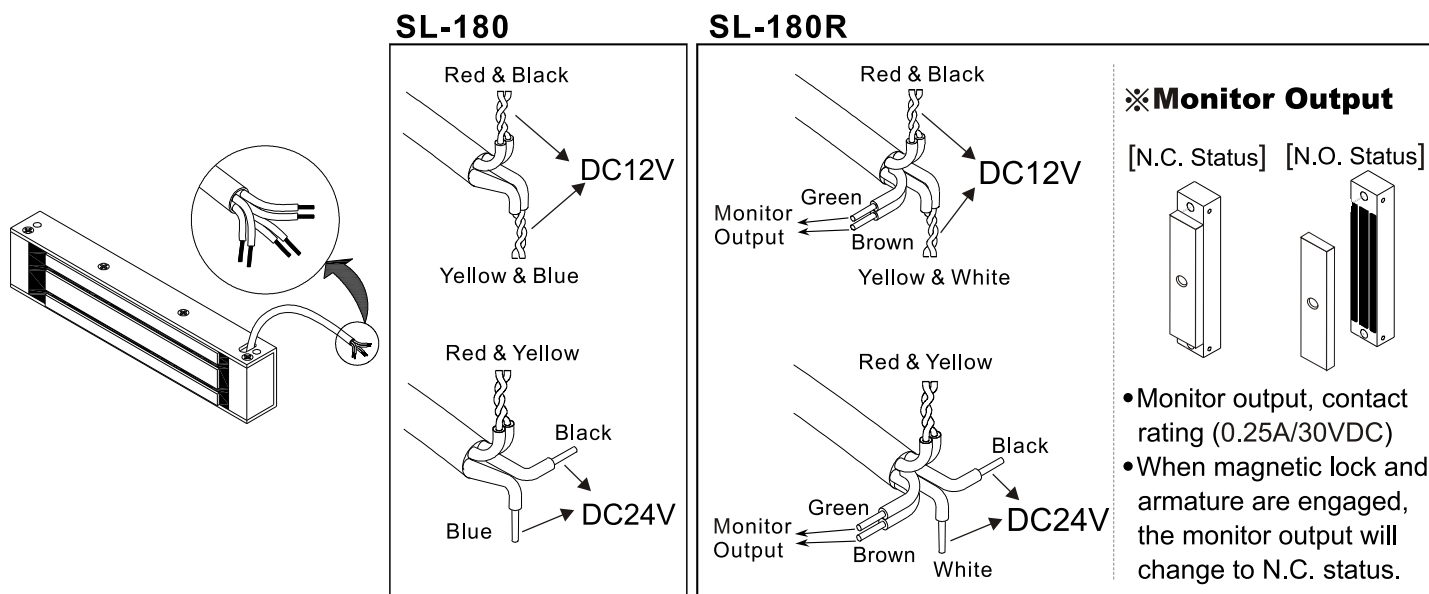
When installing magnetic lock user should be sure of type of door used .
Magnetic lock is specifically for use of out-swing door.



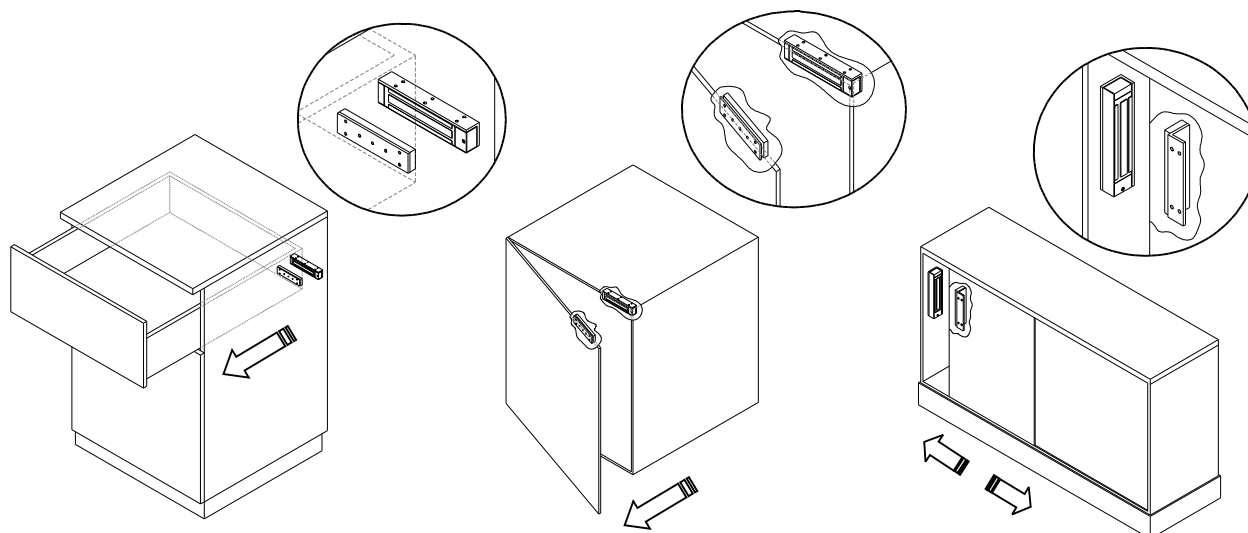
【 Out-swing door 】

【 Installation diagram 】

※ Connection Diagram



※ Installation for Drawer or Dresser



* Optional "L bracket" to be used for fitting

Note :

The armature must be loose slightly to compensate the door misalignment, so that the armature face and the magnet face can be closed and make the magnetic force to aximum effect.

Optional SB bracket for easy installation to prevent unnecessary drilling through the door and screw it with exnut bolt.

