

Datasheet

P300/600RP - Short Architectural Handle

Product Description

Magnetic pull handles are becoming increasingly popular with sites that require a combination of strong holding force and an aesthetic finish. Ideal for high traffic zones such as schools or public buildings, the handles can be fitted to either new or existing doors.

The P300RP and P600RP are 400mm or 600 mm handles incorporating 1 x 300kg or 2 x 300kg low consumption monitored magnets. They are suited for internal and external use.

The handles can be fitted using either the REO spacer, the ALMA cable tray or the REOMA spacer and cable tray kit for a better finish.



Key Features

- Fit to new or retrofit to existing doors
- Aesthetic finish to magnetic locking
- 300kg or 600kg holding force
- Ideal for high traffic sites
- Low consumption
- Can be sprayed in custom RAL colour
- Suitable for wooden, metal, or glass doors


 Certification

 DEEE

RoHS Certification

 IP66

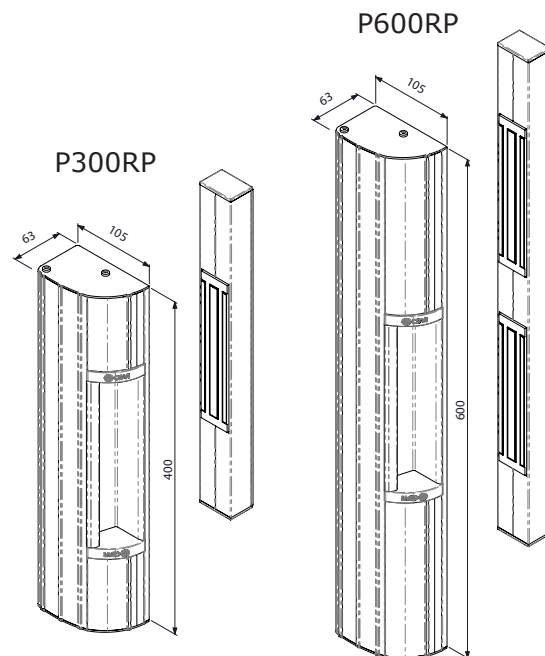
 IK10

 100kg pre-load
(FR regulation NFS 61-937)

 -40°C to 70°C

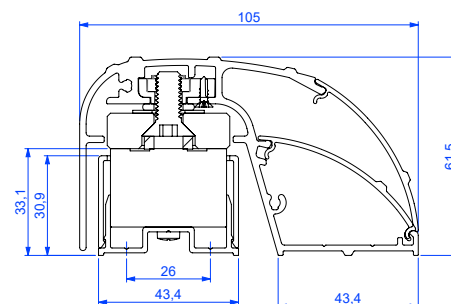
Product Specifications

Material:	Satin anodised aluminium
Mounting:	Surface, vertical or horizontal
Lock mode:	Fail safe
Holding force:	P300RP: 1 x 300kg P600RP: 2 x 300kg
Relays:	1 per maglock
Contacts:	NO/NC
Weight:	P300RP: 2.6kg P600RP: 4.55kg



Electrical Specifications

Power input:	P300RP: 12-24 Vdc P600RP: 12/24/48 Vdc
Consumption:	290mA @ 12Vdc (per maglock) 145mA @ 24Vdc (per maglock) 145mA @ 48Vdc (2 maglocks)

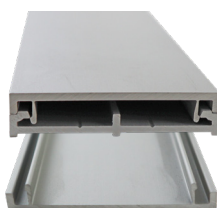


Accessories



REO

2500mm aluminium spacer for architectural handles



ALMA

2500mm aluminium cable tray for architectural handles



PRP800

2500mm mimic handle section for reverse side of door

Range References

F0519000023	P300RP	Architectural handle, 1x300kg monitored magnet, 400mm
F0519103000002	P600RP	Architectural handle, 2x300kg monitored magnet, 600mm