

Datasheet

P300/600EVO - Architectural Handle with LED

Product Description

Magnetic pull handles are becoming increasingly popular with sites that require a combination of strong holding force and an aesthetic finish. Ideal for high traffic zones such as schools or public buildings, the handles can be fitted to either new or existing doors.

P300EVO & P600EVO are 500mm or 700mm handles incorporating 1 x 300kg or 2 x 300kg low consumption monitored magnets and are exclusively to be installed internally.

The handles are monitored and indicate the status of the door (open or closed) with LEDs.



We are
GOING GREEN

Key Features

- Fit to new or retrofit to existing doors
- Aesthetic finish to magnetic locking
- Low consumption
- Can be sprayed in custom RAL colour
- Suitable for wooden, metal, or glass doors
- Visual feedback with LEDs



CE Certification

 DEEE

RoHS Certification

IP IP42

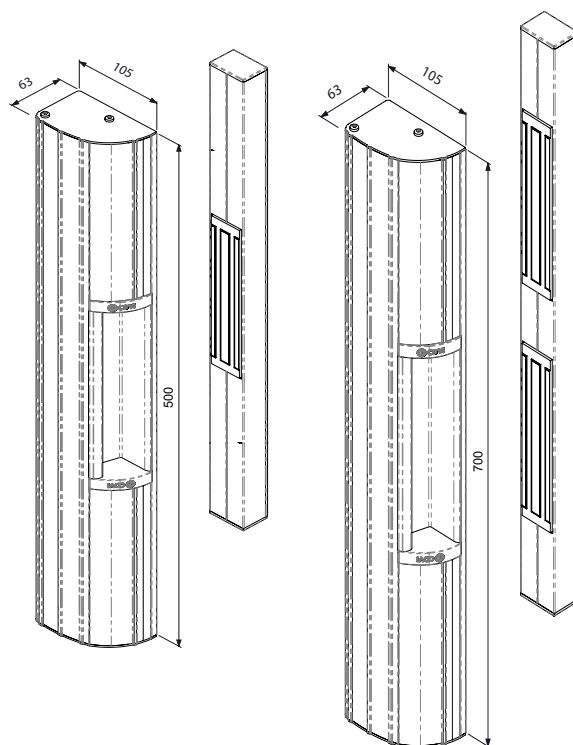
IK IK10

 100kg pre-load
(FR regulation NFS 61-937)

t° -20°C to 60°C

Product Specifications

Material:	Satin anodised aluminium
Mounting:	Surface, vertical or horizontal
Lock mode:	Fail safe
Holding force:	P300EVO: 1 x 300kg P600EVO: 2 x 300kg
Relays:	1 per maglock
Contacts:	NO/NC
Weight:	P300EVO: 2.5kg P600EVO: 4.5kg



Electrical Specifications

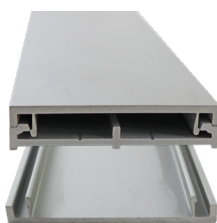
Power input:	12/24/48 Vdc
Consumption:	325mA @ 12Vdc (per maglock) 165mA @ 24Vdc (per maglock) 80mA @ 48Vdc (per maglock)

Accessories



REO

2500mm aluminium spacer for architectural handles



ALMA

2500mm aluminium cable tray for architectural handles



PRP800

2500mm mimic handle section for reverse side of door

Range References

F0519000141	P300EVO	Architectural handle, 1x300kg monitored magnet, 500mm, LED indication
F0519000143	P600EVO	Architectural handle, 2x300kg monitored magnets, 700mm, LED indication