

* ALWAYS TEST THE UNIT ON SITE BEFORE INSTALLATION TO AVOID RESTOCKING FEES *

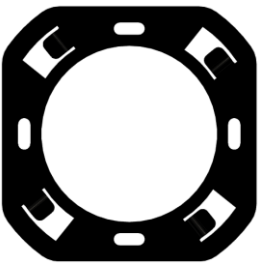
Install Preparation



Monitor

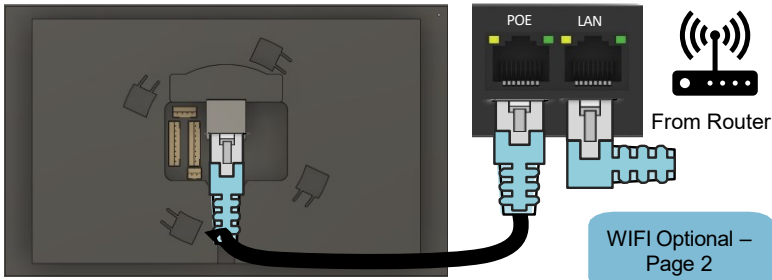


POE Plug



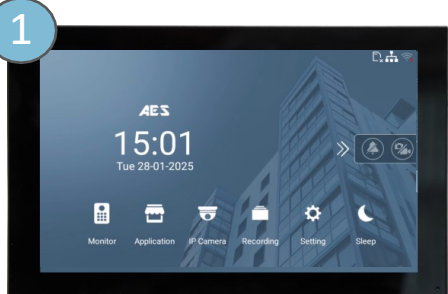
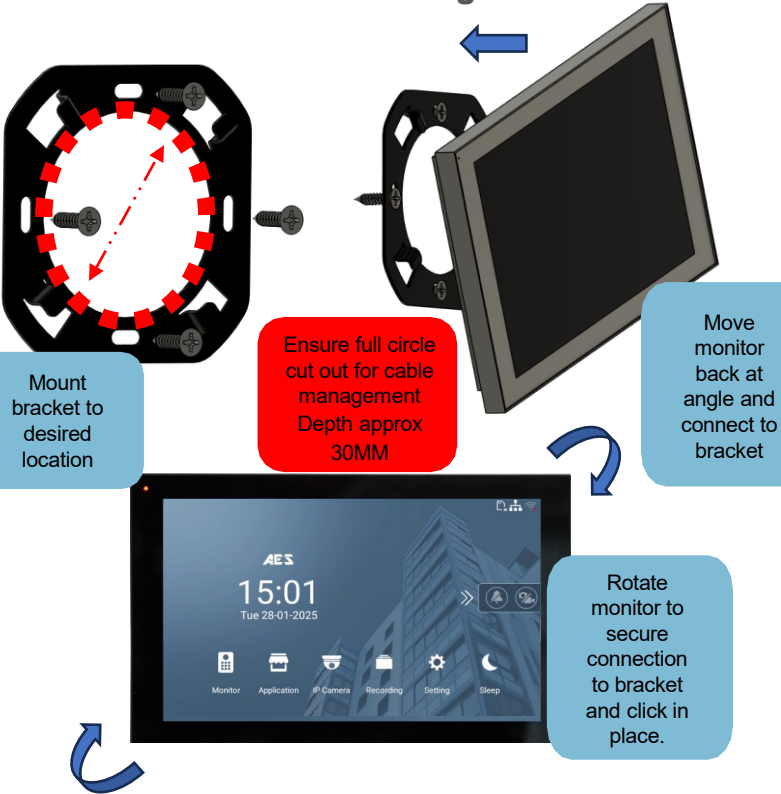
Wall Bracket

POE Plug

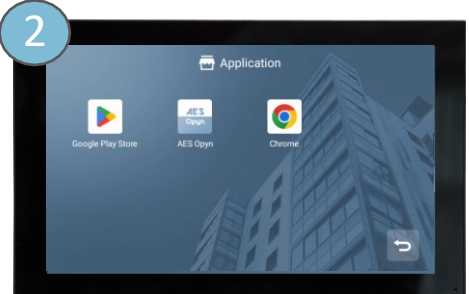


To Monitor

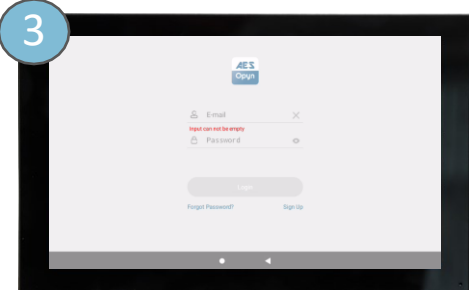
Wall Mounting



Power on the monitor and wait for it to finish booting up.



Under "Application" select the "AES Opyn" app.



Create an account or login if you already have one.



Scan QR CODE to the OPYN QSG for app instructions.

* ALWAYS TEST THE UNIT ON SITE BEFORE INSTALLATION TO AVOID RESTOCKING FEES *

WI-FI CONNECTION

If you don't wish to use Ethernet for network connection, you can use WIFI.

1



Select "SETTING"

2



Select "WIFI"

3



Select "WIFI Config"

4

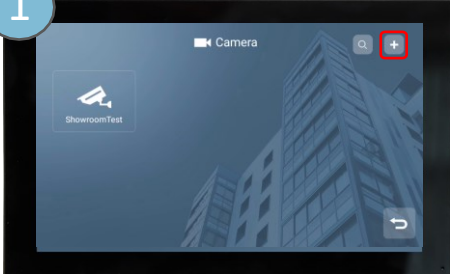


Select desired network and enter selected password.

Note: Make sure WIFI is toggled ON

ADD IP CAMERA

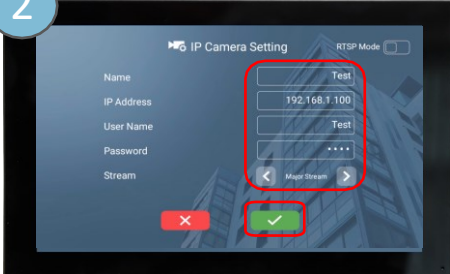
1



From the home screen click "IP Camera".

Here you can view existing IP cameras or add new ones using the "+" icon.

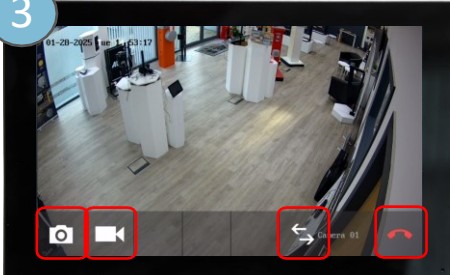
2



Enter a display name, IP address and login details for the IP Camera.

Then press the green tick to add.

3



- Take snapshots or video recordings of the feed.
- Swap between cameras if you have multiple and
- Exit the view using the icons on the screen.

IMPORTANT
No WIFI Antenna needed



NEED MORE ASSISTANCE?
+44 (0)288 639 0693

SCAN THIS QR CODE TO BE BROUGHT TO OUR RESOURCES PAGE.
VIDEOS | HOW-TO GUIDES | MANUALS | QUICK START GUIDES