

SL-350 Strike Lock Installation Manual

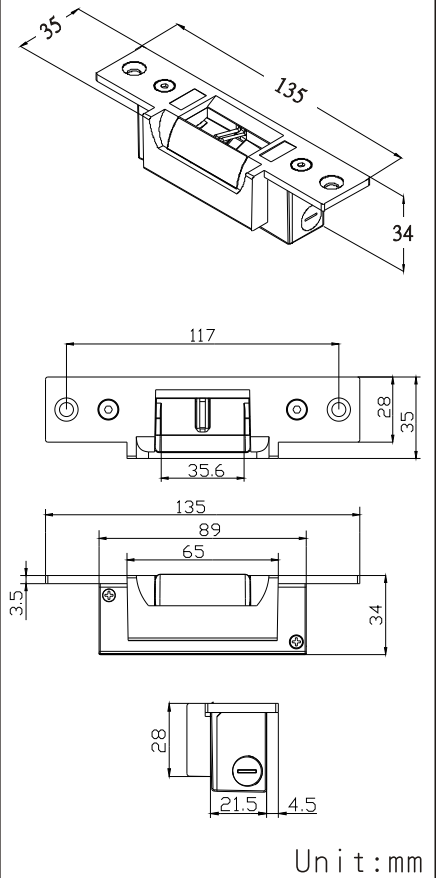
※ Features:

1. Suitable for spring latch bolt : W35mm * H15mm.
2. All purpose type, adjustable Fail-Secure type or Fail-Safe type.
3. Standard type power in is DC12V(DC24V optional).
4. Built-in diode protection.
5. Suitable for hollow door or wooden door (Door thickness 37 mm or more are required).
6. Built-in door position and lock state output.
7. Pulling force up to 500 Kg.

※ Specifications:

Item	Model	SL-350S	SL-350A	SL-350B	Note
Power Input		DC 12V(DC 24V Optional)			± 15%
Operation Current		180mA@DC12V (90mA@DC24V)			± 5%
Door Positions		X	○	○	
Lock State		X	X	○	
PIN Specifications		2PIN	5PIN	2PIN&6PIN	
Mechanic life		more than 1,000,000 times			
Operation Temperature		-30°C~50°C			
Warranty		1 year under normal circumstances			
Weight		270g			

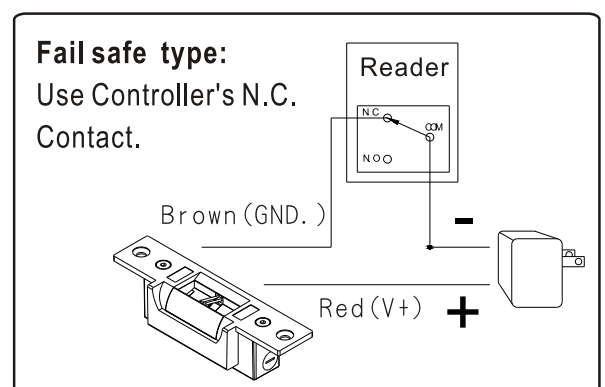
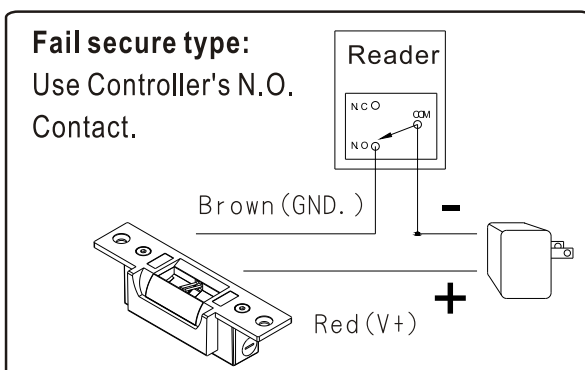
※ Dimensions:



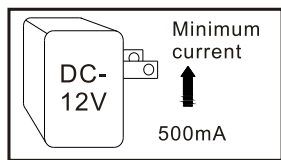
※ Contact Diagram:

Color	Model	2PIN connecter	5PIN connecter	6PIN connecter
Brown		GND -	GND -	Lock state output N.C
Red		VCC +	VCC +	Lock state output N.O
Orange		/	Door position output N.C	Lock state output COM
Yellow			Door position output COM	Door position output N.C
Green			Door position output N.O	Door position output N.O
Blue				Door position output COM
Note		Attention!! Contact rating 1A@125V		

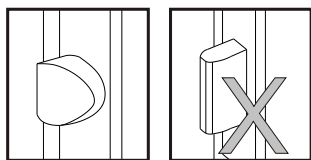
※ Wiring Diagram:



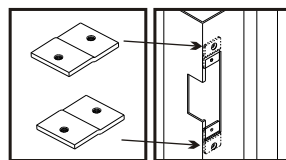
※ **Please check before installation:**



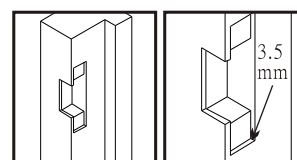
500mA@DC12V



Only for spring latch bolt

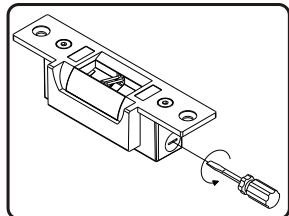


Use shims for hollow frame

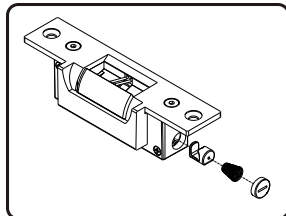


Depth of the face plate (wooden frame)

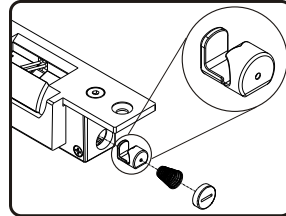
※ **Adjusting Fail Secure and Fail Safe:**



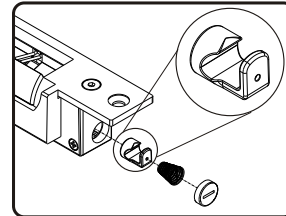
Unscrew nut



Parts position

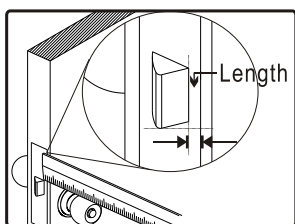


Adjust to fail secure type

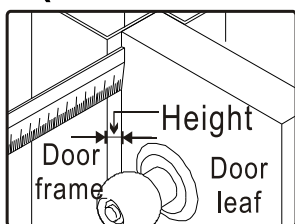


Adjust to fail safe type

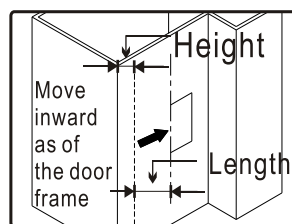
※ **Installation steps (Hollow door):**



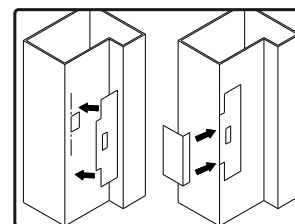
Step1: Measure the latch position



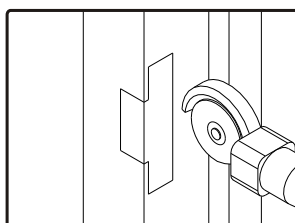
Step2: Close the door and measure the height between the door leaf and the door frame.



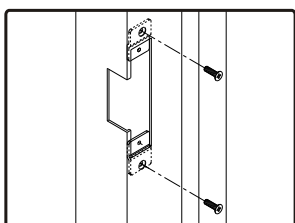
Step3: Confirm the latch position.



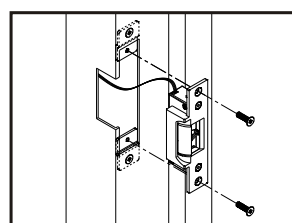
Step4: Paste the sticker.



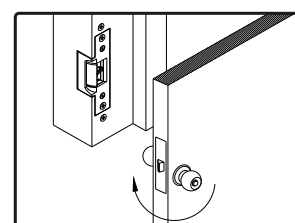
Step5: Cut according to the sticker shown.



Step6: Fix shimes

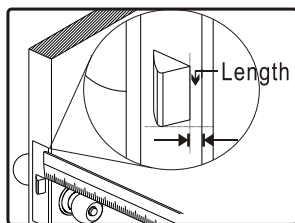


Step7: Place the wires in the hole and fit the strike lock with the screws

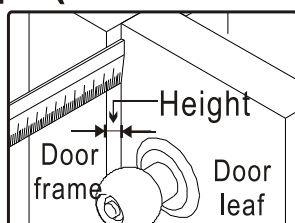


Completed

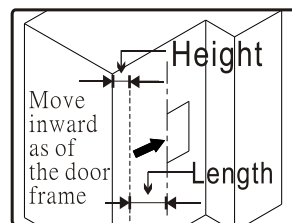
※ **Installation steps (Wooden door):**



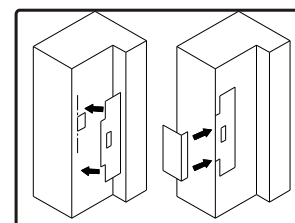
Step1: Measure the latch position



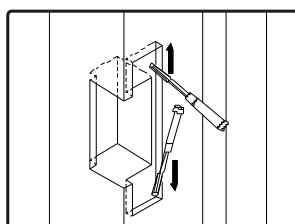
Step2: Close the door and measure the height between the door leaf and the door frame.



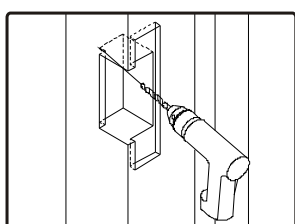
Step3: Confirm the latch position.



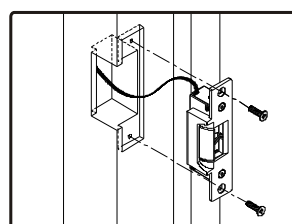
Step4: Paste the sticker.



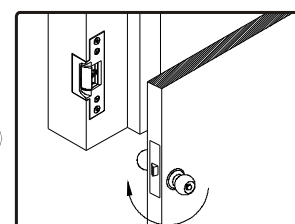
Step5: Knock out installation hole with a chisel.



Step6: Drill the wiring hole for the strike lock.



Step7: Place the wires in the hole and fit the strike lock with the screws



Completed