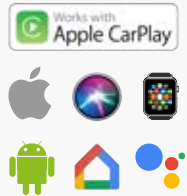


SMART GSM DEVICE



COMPATIBLE WITH



GSM SMART DEVICE - APP / WEB BASED USER INTEGRATION

SG304GI

12-24vdc - 1x relay output C, NO 60v/0.9a - 1x input - 3/4G - unlimited app users

SG304GI

- Unlimited Palgate application users
- Open by application / dialling / Siri
- Control with free application or easy web interface*
- Real time notifications to Email, Push to PalGate app
- API *
- Unlimited logs*
- Timers / events
- Import/Export Excel files
- Programmable relay pulse width
- Support 2G/3G/4G networks
- Input voltage 12-24 VDC
- Size 50x70 mm

PAL Electronics:

Are a manufacturer of IoT primarily used for gate automation/barriers/doors/speed doors & access control.

PAL Electronics solution based 4G/long range RFID/Bluetooth. Smart small wireless products which can be manage & control remotely from the web portal & App.

Remote control- encrypted remote control-can't be copied. Like any other product it has a serial number which can be managed via the web portal & define the time frame which you want the remote to be active.

Reliability:

High quality products. All is being manufactured in Israel with high level of QC & QA.

Manage all from one place:

All Pal's units are managed from 1 web portal/app.

End user:

User friendly app. Anyone can function it. Enjoys a fast & clean installation. Web portal/APP -gives you a log history all the entrances. Timer events, time clock and yearly calendar based on the needs.

System installation:

The difference between "Plug & play to plug & pray" easy & fast installation, due to our GSM/cellular devices. There is no need for road carving & wiring saving both time and money.

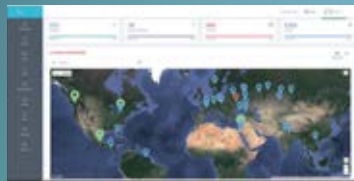
Service calls:

Any service call can be checked before attendance via the Portal & gives the installer indication of the units status which can save the false service calls for the installers.

Web portal:

A user friendly/smart system that enables remote management. The installer is able to react/solve technical calls from distance only visiting the site when needed. This will decrease service calls and ensure installers are only attending to relevant service calls saving both the end user and installer time and money.

In some cases, the problems are not in PAL's devices and can direct the client to replace the batteries in their remote control or something similar.



**1 YEARS FREE ANNUAL
SUBSCRIPTION FOR
WORLD SIM AND WEB
PORTAL ACCESS
INCLUDED**

**SAVE £120 ON THE
FIRST YEARS
SUBSCRIPTION**