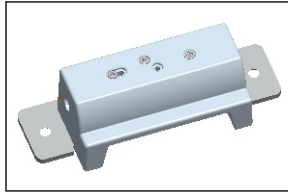


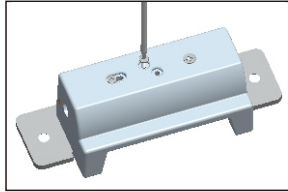
ARU-M

Technical details & mode change



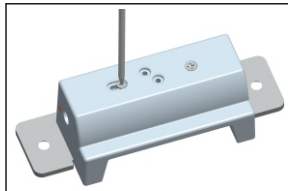
Thank you for purchasing the ARU-M
The unit is supplied in "Fail-Secure" mode, as shown in the picture on the left.

Changing the mode to "Fail-Safe" is an easy operation, moving the position of 2 x screws at the back of the unit - please follow the steps as shown below:



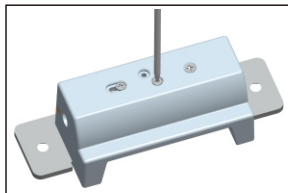
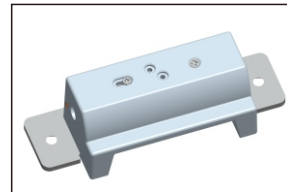
STEP 1

Remove the locking screw from the fail-secure position as shown



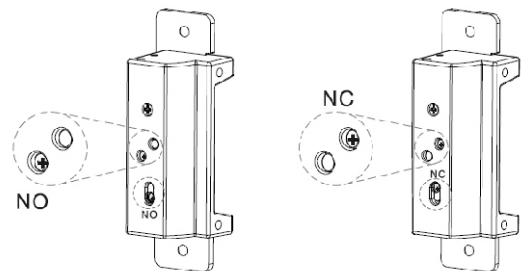
STEP 2

Loosen the adjustable screw, and slide it to the opposite end of the oblong hole. Tighten the adjustable screw.



STEP 3

Replace the locking screw into the fail-safe position as shown



Fail Secure

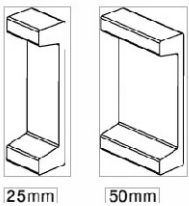
Fail Safe

Simplified mode change

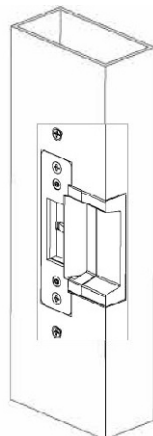


Red: +ve 12Vdc
Black: -ve 12Vdc
White: COM
Green: N.O
Yellow: N.C

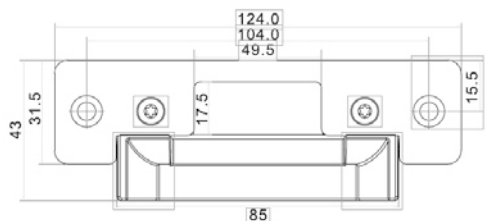
ELU25 ELU50



Where door frames are too wide, please use the optional extension lips as shown



Dimensions (short faceplate)



Dimensions (long faceplate)

