

End User Instructions

SLIMCLASSIC & SLIMHANDSFREE

SLIM | CLASSIC



SLIM | HANDSFREE

Manual Version 1

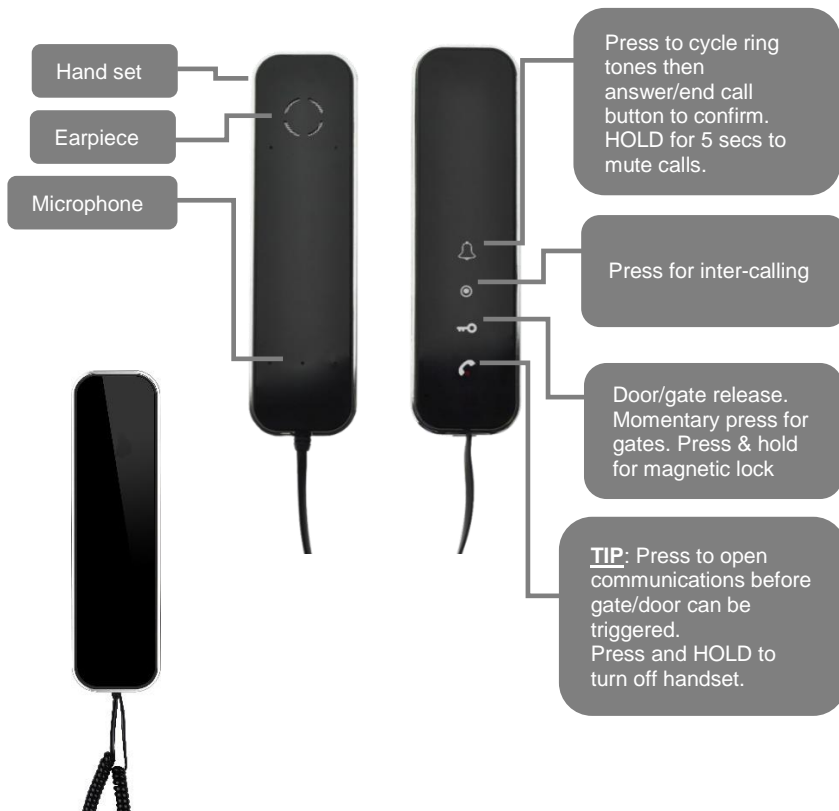
For Service, Warranty and Support Contact:

Installed By:	
Install Company Name:	
Installer Phone Number:	
Installer Email Address:	
Date of Install:	

The manufacturer cannot legally offer technical support to non-qualified gate or door installers. End users should employ the services of a professional install company to commission or support this product!

General Features

SLIMCLASSIC

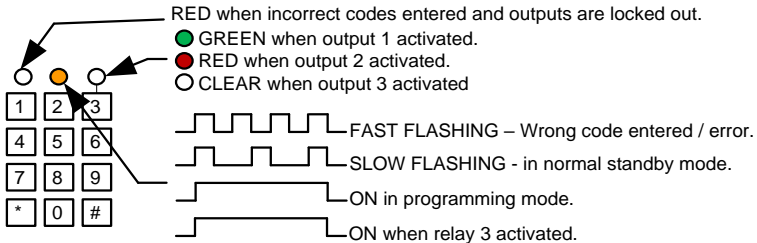


SLIMHANDSFREE



Keypad overview

This keypad has 3 outputs, all independent from the intercom/app relays. The diagram below shows the LED indicators which indicate programming and relay status information.



TIP: Amber light flashes to indicate standby mode.

TIP: Simply enter your code to trigger gates or door.

Using a Standard Keypad Code

Simply enter the code to trigger the gate or release the door.

Using a Latching Code

Enter the latching code on automatic gates to hold them open. Note: the code will need entered again to unlatch the gates.

The manufacturer cannot legally offer technical support to non-qualified gate or door installers. End users should employ the services of a professional install company to commission or support this product! Please direct support questions to your professional installer / dealer.