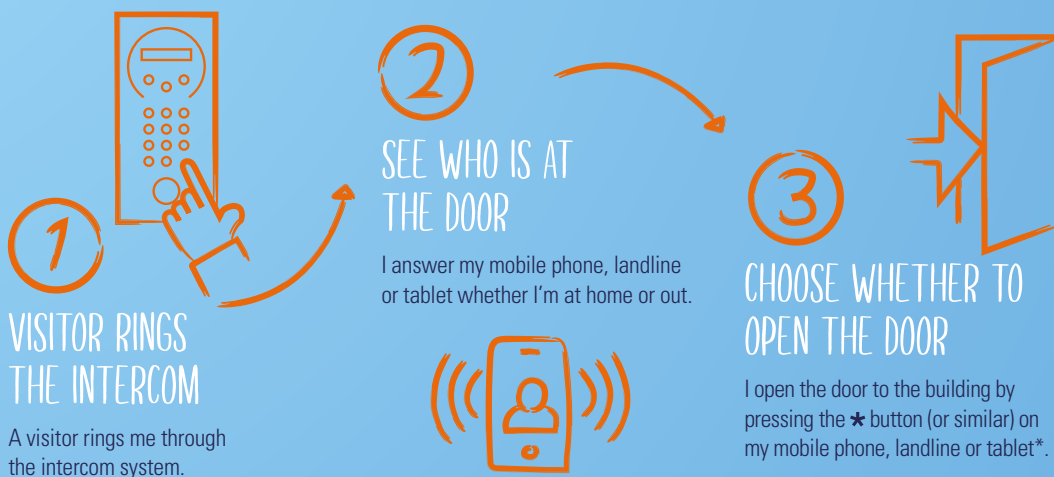



# INTERCOM SYSTEMS

---

# THE ONLY COMPLETE VIDEO AND WIRELESS ACCESS CONTROL INTERCOM SYSTEM

## HOW DOES IT WORK?



 Compatible with iOS (recent versions),  
Android systems and Windows, on  
smartphones and tablets, with the  
"Interphone Intratone" app + video option.

# TAKE BACK CONTROL OF YOUR TIME WITH INTRATONE SOLUTIONS



1

## ORDER YOUR EQUIPMENT

From your wholesaler or from Intratone (if you have a customer account).

If ordering directly from Intratone, contact your sales team or [info@intratone.uk.com](mailto:info@intratone.uk.com)  
Reminder: free shipping & no minimum order.



Create an account on [www.intratone.info](http://www.intratone.info)

Complete the service package subscription contract with your sales representative

2

REGISTER NEW PRODUCTS ON YOUR ACCOUNT ON [WWW.INTRATONE.INFO](http://WWW.INTRATONE.INFO) EVEN BEFORE YOUR PRODUCTS HAVE BEEN INSTALLED



3

### INSTALL YOUR EQUIPMENT

Prepare for your installation by downloading the instructions on [www.intratone.uk.com/resources/](http://www.intratone.uk.com/resources/)



4

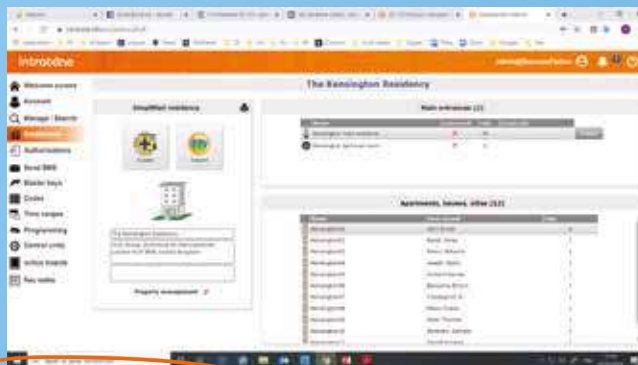
### TEST YOUR EQUIPMENT

On the management unit, activate test mode ("**Check installation**"), then enter the telephone number that the intercom system needs to contact. You then have **15 minutes** to carry out the test.

You can do so by launching test-mode on the central unit or by launching an update from the management website

5

### FINALISE PROGRAMMING RESIDENT INFO AND KEY FOBS/TRANSMITTERS



THIS STAGE CAN BE DONE USING YOUR SMARTPHONE VIA THE INTRATONE PRO APP





# CHOOSE THE RIGHT SYSTEM

Build an intercom solution tailored to your property's specific requirements in just 3 steps



## INTERCOMS



	<b>DD-01</b> <i>Page 28</i>	<b>DD-02</b> <i>Page 30</i>	<b>SC-01</b> <i>Page 32</i>	<b>SC-02</b> <i>Page 34</i>	<b>PB-01</b> <i>Page 36</i>	<b>PB-02</b> <i>Page 38</i>
<b>Number of residences managed</b>	1,000	1,000	1,000*	1,000*	max. 56	max. 24
<b>System</b>						
Video	Yes	Yes	Yes	Yes	Yes	Yes
Camera	Invisible	Invisible	Integrated	Invisible	Wide-angle	Wide-angle
<b>Connection</b>						
4G module (audio + video)	Yes	Yes	Yes	Yes	Yes	Yes
<b>4G module characteristics</b>						
4G remote module	Yes	Yes	Yes	Yes	Yes	Yes
Optional connection to a remote camera instead of the intercom camera	No	No	Yes	Yes	Yes	Yes
Maximum number of intercoms connected to one GSM module	1 video	1 video	1 video + 2 audio*	1 video + 2 audio*	1 video	1 video
<b>Access control equipment</b>						
Coded keypad	Yes	Yes	Yes	Yes	Optional	Optional
Proximity reader	Yes	Yes	Yes	Yes	No	No
Hands-free proximity reader	No	No	No	Yes	Yes	Yes
<b>Accessories</b>						
Key safe integrated into the intercom system	No	No	No	Optional	No	No
Remote key safe	Optional	Optional	Optional	Optional	Optional	Optional
Noticeboard	Optional	Optional	Optional	Optional	Optional	Optional
<b>Intercom dimensions</b>	<b>180 x 385 x 2.5</b>	<b>150 x 300 x 2.5</b>	<b>120 x 270 x 14.8</b>	<b>150 x 300 x 2.5</b>	<b>see p. 36</b>	<b>see p. 38</b>
<b>Mounting</b>						
Surface mounting	Optional	Optional	Yes	Optional	Optional	Yes
Flush-fit	Yes	Yes	No	Yes	Yes	No
<b>Finishes</b>						
Anthracite / silver finish	No	No	Yes	No	No	No
Light grey / silver finish	No	No	Yes	No	No	No
Gold finish	No	No	Yes	No	No	No
Stainless steel finish	Yes	Yes	No	Yes	Yes	No
Brass finish	No	No	No	Yes	No	No
Anthracite finish	No	No	No	No	No	Yes

\*Extension card needed

## 2 CENTRAL UNIT



**1 Door  
(03-0102)**  
Page 48



**2 Door  
(03-0101)**  
Page 49



Number of entrances managed	1	2
1 access relay card option	+3	No
2 access extension card option	No	+1
Number of relays	1 (+3)	2 (+2)
<b>Connection</b>		
4G module	Yes	Yes
<b>Management</b>		
Real-time, remote management ( <a href="http://www.intratone.info">www.intratone.info</a> )	Yes	Yes
All MIFARE key fobs and transmitters	Yes	Yes
Max number of residences managed	200	1,000
Max number of key fobs/transmitters	3,000	7,000
Number of codes	40	40
Door open time delay setting	1-99 secs	1-99 secs
<b>Functions</b>		
Open access time slots	Yes	Yes
Yearly time switch access control time slots	Yes	Yes
Time stamped events	Yes	Yes
Self diagnostics	Yes	Yes
Technical alerts	1 (+3)	2 (+2)
Programming screen	No	Yes
Power supply	12V 3A /24V 2.5A	12V 3A /24V 2.5A



DON'T FORGET  
INTRATONE KEY FOBS  
AND TRANSMITTERS

SEE PAGES 52 AND 53





# CHOOSE THE RIGHT SYSTEM CONT.

3

## UNLIMITED SERVICE PACKAGES

No commitment for Classic, 5 years commitment with Prepaid.



	CLASSIC SERVICE PACKAGE	PREPAID 15-YEARS ALL INCLUSIVE PACKAGE
Remote management platform	Yes	Yes
Audio communications	Yes	Yes
Video communications	Optional	Optional
3 years warranty on the equipment	Yes	Yes
Hardware included in the price	No	Yes
	MONTHLY COMMUNICATION SUBSCRIPTION (NO CONTRACT); HARDWARE SOLD SEPARATELY	HARDWARE AND 15 YEARS' COMMUNICATIONS PURCHASED UPFRONT

### THE UNLIMITED SERVICE PACKAGE INCLUDES:

- \* Access to and use of the management portal [www.intratone.info](http://www.intratone.info)
- \* Use of apps: My Intratone Intercom, Intratone Pro
- \* Equipment updates
- \* Access to telephone technical support
- \* Audio or video communications between the intercom system and the residents

COST EFFECTIVE

# INTRATONE INTERCOMS

## Technical overview and specifications

These specifications and features apply to all Intratone intercoms, unless otherwise specified.

## TECHNICAL SPECIFICATIONS

Power supply	Wiring	Environment	
<i>Management unit</i> 12V3A/24V 2.5A	1-door central unit 03-0102 <i>4G module - central unit</i> 4 wires (2 twisted pairs) Ø 8/10e - Max: 100m <i>Central unit - intercom system</i> 4 wires (2 twisted pairs) Ø 8/10e - Max: 100m <i>Intercom system - 4G module</i> 4 wires (2 twisted pairs) Ø 8/10e - Max: 100m	2-doors central unit 03-0101 <i>4G module - central unit</i> 6 wires (3 twisted pairs) Ø 8/10e - Max: 100m <i>Central unit - intercom system</i> 6 wires (3 twisted pairs) Ø 8/10e - Max: 100m <i>Intercom system - 4G module</i> 2 wires (1 twisted pair if video) Ø 8/10e - Max: 100m	<i>Intercom system operating temperature</i> -20°C to +60°C <i>Intercom system protection index</i> IP54 Outdoor mounting

## UNIVERSAL FEATURES

Call length	40 sec.
Configurable welcome message (64 scrolling or static characters)	Yes
Simplified calling for the partially sighted	Yes
Call sheet display (apartments) during time slots	Yes
Operational messages: (call in progress... ) Speech synthesis + display	Yes
Anti-disturbance <sup>(1)</sup>	Yes
Sound level adjustment without dismantling (depending on associated central unit)	Yes
Automatic call return if no answer	Yes

<sup>(1)</sup> System ensuring that a resident is not disturbed by repetitive calls

## HOW THE INSTALLATION WORKS

- Resident key fobs open the door to the hall.
- Visitors contact residents using the intercom system.
- Residents open the entrance door by pressing the **★** button (or similar) on their telephone.
- The property manager communicates with residents via the noticeboard in the hall.







# DD-01 VIDEO INTERCOM

Direct dial intercom system



**DD-01 video intercom:** coded keypad with yellow rings on buttons, dial by flat number, access control square reader - flush fit.

- ▶ Pinhole camera
- ▶ Stainless steel finish
- ▶ Trade button



Video



Accessible for all



Vandal resistant



Remote online management

[www.intratone.info](http://www.intratone.info)

Calls/updates included	Request quotation
<b>Access control equipment</b>	
Coded keypad without braille	Yes
Trade button	Yes
Square proximity reader	Yes
<b>Mounting</b>	
Flush-fit	Yes
<b>Finish</b>	
Stainless steel	Yes
<b>Dimensions</b>	
Intercom facade	180 x 385 x 2.5mm
Intercom back box	156.2 x 359 x 60mm

FOR MORE INFORMATION REFER  
TO PAGES 48 AND 49 (CENTRAL UNITS)

# RANGE

<b>Products</b>	<b>Intercom system only</b>
02-0200	Stainless steel
<b>Complete 200 name pack: 1 intercom system + 1-door central unit (03-0102)</b>	
02-0201	Stainless steel
<b>Complete 1,000 name pack: 1 intercom system + 1 large management unit (03-0101)</b>	
02-0202	Stainless steel
<b>Accessory</b>	
12-0131	Surface mounted box for direct dial video intercom - stainless steel (185.5 x 390.5 x 71mm)

DON'T FORGET TO ADD YOUR SERVICE PACKAGE!

CLASSIC

SERVICE PACKAGE

MONTHLY COMMUNICATION SUBSCRIPTION (NO CONTRACT);  
HARDWARE SOLD SEPARATELY

PREPAID

15-YEARS ALL INCLUSIVE PACKAGE

HARDWARE AND 15 YEARS' COMMUNICATIONS PURCHASED UPFRONT

**COST EFFECTIVE** £ £ £





# DD-02 VIDEO INTERCOM

Direct dial intercom system



**DD-02 video intercom:** backlit coded keypad with yellow rings and braille, dial by flat number, access control square reader - flush fit.

- ▶ Pinhole camera
- ▶ Swivel hinge
- ▶ Stainless steel finish
- ▶ Audio induction loop



Video



Accessible for all



Vandal resistant



Remote online management

[www.intratone.info](http://www.intratone.info)

Calls/updates included	Request quotation
<b>Access control equipment</b>	
Coded keypad with braille	Yes
Audio induction loop	Yes
Square proximity reader	Yes
<b>Mounting</b>	
Flush-fit	Yes
<b>Finish</b>	
Stainless steel	Yes
<b>Dimensions</b>	
Intercom facade	150 x 300 x 2.5mm
Intercom back box	126.4 x 274 x 45mm

FOR MORE INFORMATION REFER TO PAGES 48 AND 49 (CENTRAL UNITS)

# RANGE

<b>Products</b>	<b>Intercom system only</b>
02-0206	Stainless steel
<b>Complete 200 name pack: 1 intercom system + 1-door central unit (03-0102)</b>	
02-0207	Stainless steel
<b>Complete 1,000 name pack: 1 intercom system + 1 large management unit (03-0101)</b>	
02-0208	Stainless steel
<b>Accessory</b>	
12-0160	Surface mounted box for direct dial video intercom - stainless steel (155.5 x 305.5 x 67mm)

DON'T FORGET TO ADD YOUR SERVICE PACKAGE!

CLASSIC

**SERVICE PACKAGE**

MONTHLY COMMUNICATION SUBSCRIPTION (NO CONTRACT);  
HARDWARE SOLD SEPARATELY

PREPAID

**15-YEARS ALL INCLUSIVE PACKAGE**

HARDWARE AND 15 YEARS' COMMUNICATIONS PURCHASED UPFRONT

SECURE ACCESS





# SC-01 INTERCOM

## Scrolling intercom system



**SC-01 video intercom system** designed specially for renovations. With name scroll, integrated camera, 12-button backlit coded keypad and proximity reader - flush mounting.

- ▶ Vandal resistant
- ▶ Choice of 3 finishes
- ▶ Easy to fit



Video



Vandal resistant



Remote online management

[www.intratone.info](http://www.intratone.info)



### Access control equipment

Coded keypad	Yes
Square proximity reader	Yes
Call / updates included	Yes

### Mounting

Flush mounting (thickness 24mm)	Yes
---------------------------------	-----

### Finishes

Anthracite / Silver	Yes
Light grey / Silver	Yes
Gold	Yes

### Dimensions

Intercom facade	120 x 270 x 14.8mm
Intercom back box	96 x 244 x 45mm

FOR MORE INFORMATION REFER  
TO PAGES 48 AND 49 (CENTRAL UNITS)

EASY TO  
INSTALL DUE  
TO ITS SIZE

## RANGE

Products	Intercom system only
02-0126	Anthracite / silver finish
02-0135	Light grey / silver finish
02-0138	Gold finish
<b>Complete 200 name pack: 1 intercom system + 1-door central unit (03-0102)</b>	
02-0127	Anthracite / silver finish
02-0136	Light grey / silver finish
02-0139	Gold finish
<b>Complete 1,000 name pack: 1 intercom system + 1 large management unit (03-0101)</b>	
02-0128	Anthracite / silver finish
02-0137	Light grey / silver finish
02-0140	Gold finish
Accessories	
12-0134	Surface mounted box - anthracite / silver finish (125 x 273.5 x 70mm)
12-0140	Surface mounted box - light grey / silver finish (125 x 273.5 x 70mm)
12-0141	Surface mounted box - gold finish (125 x 273.5 x 70mm)

DON'T FORGET TO ADD  
YOUR SERVICE PACKAGE!

CLASSIC

SERVICE  
PACKAGE

MONTHLY COMMUNICATION  
SUBSCRIPTION (NO CONTRACT);  
HARDWARE SOLD SEPARATELY

PREPAID

15-YEARS ALL  
INCLUSIVE PACKAGE

HARDWARE AND 15 YEARS'  
COMMUNICATIONS  
PURCHASED UPFRONT

EASY  
TO FIT





# SC-02 INTERCOM

## Scrolling intercom system



With integrated key safe

**SC-02 video intercom system** with name scroll, invisible pinhole camera with 12-button backlit coded keypad and hands-free proximity reader - flush mounted.

- ▶ Hands-free proximity reader
- ▶ Choice of 2 finishes
- ▶ Swivel hinge
- ▶ Pinhole camera



Video



Accessible for all



Vandal resistant



Remote online management

[www.intratone.info](http://www.intratone.info)

### Access control equipment

Coded keypad	Yes
Hands-free proximity reader	Yes
Audio induction loop	Yes
Call / updates included	Yes

### Mounting

Flush mounting	Yes
Swivel hinge	Yes

### Finishes

Stainless steel	Yes
Brass	Yes

### Dimensions

Intercom facade - no key safe	150 x 300 x 2.5mm
Intercom back box - no key safe	126.4 x 274 x 45mm
Intercom facade - key safe	150 x 490 x 2.5mm
Intercom back box - key safe	126.4 x 464 x 51mm

FOR MORE INFORMATION REFER TO PAGES 48 AND 49 (CENTRAL UNITS)

# RANGE

Products	Intercom system only
02-0182	Stainless steel finish
02-0183	Brass finish
<b>Complete 200 name pack: 1 intercom system + 1 small management unit (03-0102)</b>	
02-0184	Stainless steel finish
02-0186	Brass finish
<b>Complete 1,000 name pack: 1 intercom system + 1 large management unit (03-0101)</b>	
02-0185	Stainless steel finish
02-0187	Brass finish
<b>Accessories</b>	
12-0108	Rain shield - stainless steel finish (155.5 x 305 x 35mm)
12-0160	Surface mounted box - stainless steel finish (155.5 x 305.5 x 67mm)

DON'T FORGET TO ADD  
YOUR SERVICE PACKAGE!

CLASSIC

SERVICE  
PACKAGE

MONTHLY COMMUNICATION  
SUBSCRIPTION (NO CONTRACT);  
HARDWARE SOLD SEPARATELY

PREPAID

15-YEARS ALL  
INCLUSIVE PACKAGE

HARDWARE AND 15 YEARS'  
COMMUNICATIONS  
PURCHASED UPFRONT

COST  
EFFECTIVE







# PB-01 INTERCOM

Flush fit push button intercom



**PB-01 intercom system with individual buttons:** digital tags, wide-angle camera, hands-free proximity reader, with or without keypad - flush mounting.

- ▶ Digital name display
- ▶ Hands-free proximity reader
- ▶ Wide angle dome camera



Video



Accessible for all



Vandal resistant



Remote online management

[www.intratone.info](http://www.intratone.info)

Access control equipment	
Coded keypad	Optional
Hands-free proximity reader	Yes
Audio induction loop	With optional keypad
Mounting	
Flush mounting	Yes
Finish	
Stainless steel	Yes
Dimensions	
Intercom facade	Upon request - varies

OPTIONAL CODED KEYPAD



56 call buttons

Coded keypad with braille	Optional
Display screen: 2 lines of 16 characters	Yes
Backlit display	Yes
Easy to store	Yes
Functional messages: (call in progress etc.) Speech synthesis	Yes
Rapid dome ejection system	Yes
Display time slots	Yes

# RANGE

Intercoms available with buttons in multiples of 4. Stainless steel finish.

	Without keypad	Intercom facade dimensions	Intercom back box dimensions	With keypad	Intercom facade dimensions	Intercom back box dimensions
4 call buttons	27-3001	150 x 345mm	127.4 x 320 x 45mm	27-3007	150 x 445mm	127.4 x 420 x 45mm
8 call buttons	27-3002	150 x 445mm	127.4 x 420 x 45mm	27-3008	260 x 445mm	237.4 x 420 x 45mm
12 call buttons	27-3003	260 x 445mm	237.4 x 420 x 45mm	27-3009	260 x 445mm	237.4 x 420 x 45mm
16 call buttons	27-3004	260 x 445mm	237.4 x 420 x 45mm	27-3010	260 x 445mm	237.4 x 420 x 45mm
20 call buttons	27-3005	260 x 445mm	237.4 x 420 x 45mm	27-3011	260 x 445mm	237.4 x 420 x 45mm
24 call buttons	27-3006	260 x 445mm	237.4 x 420 x 45mm	27-3012	370 x 445mm	347.4 x 420 x 45mm
28 call buttons	27-3020	370 x 445mm	347.4 x 420 x 45mm	27-3013	370 x 445mm	347.4 x 420 x 45mm
32 call buttons	27-3021	370 x 445mm	347.4 x 420 x 45mm	27-3014	370 x 445mm	347.4 x 420 x 45mm
36 call buttons	27-3022	370 x 445mm	347.4 x 420 x 45mm	27-3015	370 x 445mm	347.4 x 420 x 45mm
40 call buttons	27-3023	370 x 445mm	347.4 x 420 x 45mm	27-3016	480 x 445mm	457.4 x 420 x 45mm
44 call buttons	27-3024	480 x 445mm	457.4 x 420 x 45mm	27-3017	480 x 445mm	457.4 x 420 x 45mm
48 call buttons	27-3025	480 x 445mm	457.4 x 420 x 45mm	27-3018	480 x 445mm	457.4 x 420 x 45mm
52 call buttons	27-3026	480 x 445mm	457.4 x 420 x 45mm	27-3019	480 x 445mm	457.4 x 420 x 45mm
56 call buttons	27-3027	480 x 445mm	457.4 x 420 x 45mm			

**Products Accessories - surface mounted box - stainless steel finish**

12-0166	4 call buttons without keypad (156.5 x 351.5 x 50mm)
12-0170	4 call buttons with keypad and 8 call buttons without keypad (156.5 x 451.5 x 50mm)
12-0169	From 8 call buttons with keypad to 24 call buttons without keypad (266.5 x 451.5 x 50mm)
12-0168	From 24 call buttons with keypad to 40 call buttons without keypad (376.5 x 451.5 x 50mm)
12-0167	From 40 buttons with keypad to 56 buttons without keypad (486.5 x 451.5 x 50mm)

**CLASSIC**

**SERVICE PACKAGE**

MONTHLY COMMUNICATION SUBSCRIPTION (NO CONTRACT);  
HARDWARE SOLD SEPARATELY

**PREPAID**

**15-YEARS ALL INCLUSIVE PACKAGE**

HARDWARE AND 15 YEARS' COMMUNICATIONS PURCHASED UPFRONT

**DON'T FORGET TO ADD YOUR SERVICE PACKAGE!**



# PB-02 INTERCOM

Surface mounted push button intercom



**PB-02 intercom system with individual buttons:** digital tags, wide-angle camera, hands-free proximity reader, with or without keypad - surface mounting.

- ▶ Digital name display
- ▶ Hands-free proximity reader
- ▶ Wide angle dome camera



Video



Accessible for all



Vandal resistant



Remote online management

[www.intratone.info](http://www.intratone.info)

Access control equipment	
Coded keypad	Optional
Hands-free proximity reader	Yes
Audio induction loop	With optional keypad
Mounting	
Surface mounting	Yes
Finish	
Anthracite	Yes
Dimensions	
Intercom facade	Upon request - varies

OPTIONAL CODED KEYPAD



20 call buttons

Coded keypad with braille	Optional
Display screen: 2 lines of 16 characters	Yes
Backlit display	Yes
Easy to store	Yes
Functional messages <sup>(1)</sup> : (call in progress etc.) Speech synthesis	Yes
Rapid dome ejection system	Yes
Display time slots	Yes

<sup>(1)</sup> Procedure to avoid residents being disturbed by repetitive calls

# RANGE

Intercoms available with buttons in multiples of 4. Anthracite finish.

	Without keypad	Intercom facade dimensions	Intercom back box dimensions	With keypad	Intercom facade dimensions	Intercom back box dimensions
4 call buttons	27-0001	118 x 300 x 27mm	108 x 280.86 x 21mm	27-0007	118 x 400 x 27mm	108 x 380.86 x 21mm
8 call buttons	27-0002	118 x 400 x 27mm	108 x 380.86 x 21mm	27-0008	225 x 300 x 27mm	215 x 280.86 x 21mm
12 call buttons	27-0003	225 x 300 x 27mm	215 x 280.86 x 21mm	27-0009	225 x 300 x 27mm	215 x 280.86 x 21mm
16 call buttons	27-0004	225 x 300 x 27mm	215 x 280.86 x 21mm	27-0010	225 x 400 x 27mm	215 x 380.06 x 21mm
20 call buttons	27-0005	225 x 400 x 27mm	215 x 380.06 x 21mm	27-0011	225 x 400 x 27mm	215 x 380.06 x 21mm
24 call buttons	27-0006	225 x 400 x 27mm	215 x 380.06 x 21mm			

Discover the full range at [intratone.co.uk/resources](http://intratone.co.uk/resources)



DON'T FORGET TO ADD YOUR SERVICE PACKAGE!

CLASSIC

SERVICE PACKAGE

MONTHLY COMMUNICATION SUBSCRIPTION (NO CONTRACT); HARDWARE SOLD SEPARATELY

PREPAID

15-YEARS ALL INCLUSIVE PACKAGE

HARDWARE AND 15 YEARS' COMMUNICATIONS PURCHASED UPFRONT

Get the answers to all your questions at +44 (0) 208 037 9012 or [info@intratone.uk.com](mailto:info@intratone.uk.com)

39