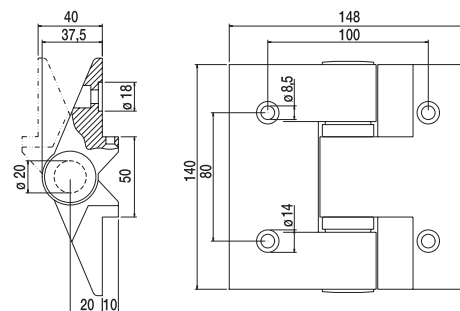


Accessori per portoni

I Cerniere in lega leggera, perno $\varnothing 20$, verniciate nero raggrinzato a 2 ali mezzeria per portoni a libro

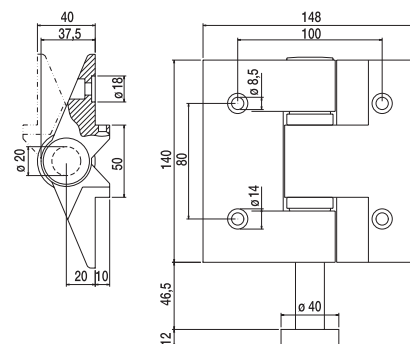
- UK Light alloy black opaque varnished hinge with two centre-line wings, pin $\varnothing 20$
 D 2 - Flügel - Scharniere (mitte) aluminium Schwarz, $\varnothing 20$ Stift
 F Charnière centrale, axe $\varnothing 20$, à 2 côtés - aluminium noir avec axe $\varnothing 20$
 E Bisagra central, eje $\varnothing 20$, en aleación de aluminio negro opaco con 2 alas par atornillar con pierno $\varnothing 20$
 RUS Петля центральная двойная для складных ворот – легкий сплав



Tipo Type	Articolo - Article	Portata Capacity		
	Riferimento - Reference	€ x1	N°	€
	CRN 1 A	EA 00 14 1M	150	15 16,4
	CRN 1 A PIANA	EA 00 14 11	150	15 16

I Cerniere in lega leggera, perno $\varnothing 20$, verniciate nero raggrinzato a 2 ali inferiori c/cusc. $\varnothing 40$

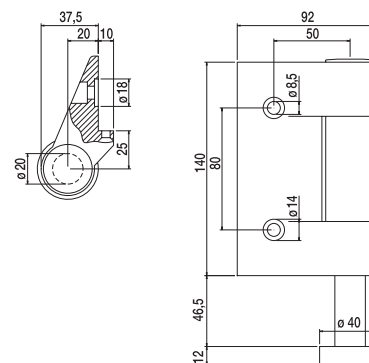
- UK Hinge with two lower wings bearings $\varnothing 40$ black, pin $\varnothing 20$
 D 2 - Flügel - Scharniere (unten) mit Lager $\varnothing 40$ Schwarz, $\varnothing 20$ Stift
 F Charnière inférieure à 2 côtés avec roulement $\varnothing 40$ noir, axe $\varnothing 20$
 E Bisagra inferior en aleación de aluminio negro opaco con 2 alas y eje $\varnothing 40$, pierno $\varnothing 20$
 RUS Петля нижняя двойная с подшипником легкий сплав $\varnothing 40$



Tipo Type	Articolo - Article	Portata Capacity		
	Riferimento - Reference	€ x1	N°	€
	CRN 2 A	EA 00 14 2I	150	10 13,2
	CRN 2 A PIANA	EA 00 14 2I	150	10 13

I Cerniere in lega leggera, perno $\varnothing 20$, verniciate nero raggrinzato di testa a 1 ala inferiori c/cusc. $\varnothing 40$

- UK Hinge head with one lower wings bearing $\varnothing 40$ black, pin $\varnothing 20$
 D 1 - Flügel Kopfscharniere (unten) mit Lager $\varnothing 40$ Schwarz, $\varnothing 20$ Stift
 F Charnière inférieure à 1 côté avec un roulement $\varnothing 40$ noir, axe $\varnothing 20$
 E Bisagra inferior en aleación de aluminio negro opaco con 1 ala y eje $\varnothing 40$, pierno $\varnothing 20$
 RUS Петля нижняя одинарная с подшипником $\varnothing 40$

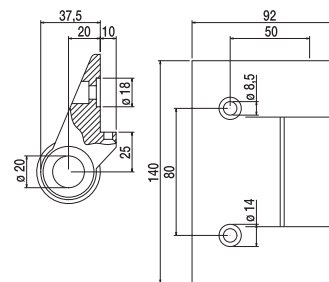


Tipo Type	Articolo - Article	Portata Capacity		
	Riferimento - Reference	€ x1	N°	€
	CRN 3 A	EA 00 14 3I	150	15 18
	CRN 3 A PIANA	EA 00 14 3I	150	15 17,5

Accessori per portoni

I Cerniere in lega leggera, verniciate nero raggrinzato di testa 1 ala superiore

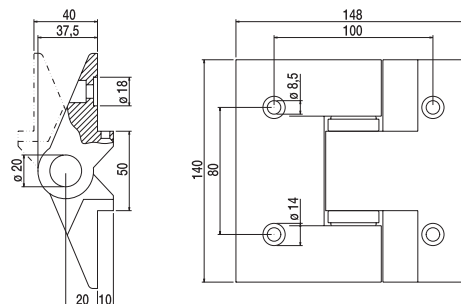
- UK Hinge with one upper wing for carriage pin black
 D 1 - Flügel Kopfscharniere (oben) fuer Wagen - Bolzen Schwarz
 F Charnière supérieure à 1 côté pour passage axe de chariot noir
 E Bisagra superior en aleación de aluminio negro opaco con 1 ala sin eje
 RUS Петля верхняя одинарная для оси тележки



Tipo Type	Articolo - Article	Portata Capacity		
	Riferimento - Reference	KG x1	N°	KG
	CRN 4 A EA 00 14 4S	150	15	10
	CRN 4 A PIANA EA 00 14 41	150	15	9,5

I Cerniere in lega leggera, verniciate nero raggrinzato a 2 ali superiori, senza perno, per portoni a libro

- UK Hinge with two upper wings without pin black
 D 2 - Flügel Scharniere (oben) ohne Bolzen Schwarz
 F Charnière supérieure à 2 côtés sans axe noir
 E Bisagra superior en aleación de aluminio negro opaco sin eje
 RUS Петля верхняя двойная без оси

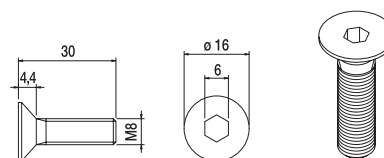


Tipo Type	Articolo - Article	Portata Capacity		
	Riferimento - Reference	KG x1	N°	KG
	CRN 5 A EA 00 14 5S	150	15	11,3
	CRN 5 A PIANA EA 00 14 51	150	15	10,8

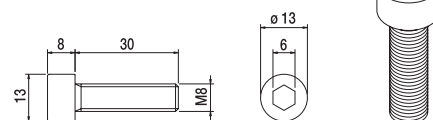
I Viti di fissaggio per cerniere

- UK Fastening screws for hinges
 D Befestigungs - schrauben fuer Scharniere
 F Vis de fixation pour charnières
 E Tornillos de la cerradura para las bisagras
 RUS Крепежные детали - болты для шарниров

Tropicalizzata



Zincata bianco o nero

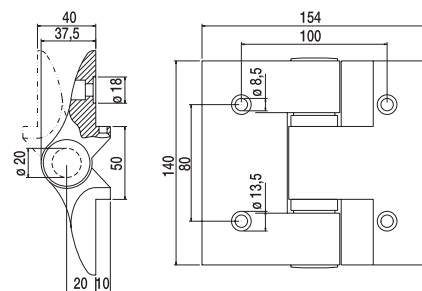


Articolo - Article	Descrizione Description		
Riferimento - Reference		N°	KG
160 T VT 08 30 SX	Tropicalizzate	100	1,2
161 Z VZ 08 30 BX	Zincate bianco	100	1,7
161 N VN 08 30 BX	Zincate nero	100	1,7

Accessori per portoni

I Cerniere in lega leggera, perno $\varnothing 20$, verniciate nero raggrizzato a 2 ali di mezzeria per port. a libro

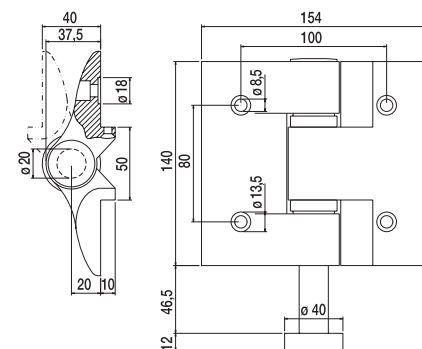
- UK Bended light alloy black opaque varnished hinge with two centre-line wings, pin $\varnothing 20$
- D Biegende 2 - Flügel - Scharniere (mitte) Schwarz - alu mit $\varnothing 20$ Stift
- F Charnière centrale à 2 côtés en aluminium noir opaque, axe $\varnothing 20$
- E Bisagra central, redondeada en aleación de aluminio lacado negro mate con 2 alas con pierno $\varnothing 20$
- RUS Петля центральная двойная – легкий сплав



Tipo Type	Articolo - Article	Portata Capacity		
	Riferimento - Reference	€ x1	N°	€
	CRN 1 AC EA OC 14 1M	150	15	16,2
	CRN 1 AC PIANA EA OC 14 11	150	15	16

I Cerniere in lega leggera, perno $\varnothing 20$, verniciate nero raggrizzato a 2 ali inferiori c/cusc. $\varnothing 40$

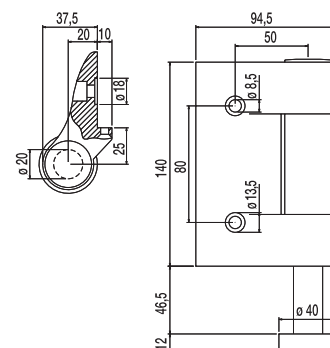
- UK Hinge with two lower wings bearings $\varnothing 40$, pin $\varnothing 20$
- D Biegende 2 - Flügel - Scharniere (unten) mit Lager $\varnothing 40$ mm (mitte) Schwarz-aluminium, $\varnothing 20$ Stift
- F Charnière inférieure à 2 côtés avec roulement $\varnothing 40$ en aluminium noir opaque, axe $\varnothing 20$
- E Bisagra inferior en aleación de aluminio lacado negro mate con eje $\varnothing 40$, pierno $\varnothing 20$
- RUS Петля нижняя двойная с подшипником $\varnothing 40$ – легкий сплав



Tipo Type	Articolo - Article	Portata Capacity		
	Riferimento - Reference	€ x1	N°	€
	CRN 2 AC EA OC 14 2I	150	10	13,2
	CRN 2 AC PIANA EA OC 14 2I	150	10	13

I Cerniere in lega leggera, perno $\varnothing 20$, verniciate nero raggrizzato di testa a 1 ala inferiori c/cusc. $\varnothing 40$

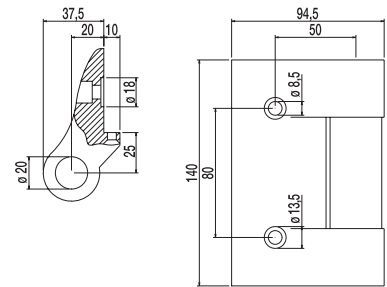
- UK Hinge head with one lower wing bearing $\varnothing 40$, pin $\varnothing 20$
- D Biegende 1 - Flügel Kopscharniere mit Lager $\varnothing 40$ mm, $\varnothing 20$ Stift
- F Charnière inférieure à 1 côté avec un roulement $\varnothing 40$, axe $\varnothing 20$
- E Bisagra inferior lateral redondeada en aleación de aluminio lacado negro mate con eje $\varnothing 40$, pierno $\varnothing 20$
- RUS Петля нижняя одинарная с подшипником $\varnothing 40$



Tipo Type	Articolo - Article	Portata Capacity		
	Riferimento - Reference	€ x1	N°	€
	CRN 3 AC EA OC 14 3I	150	15	17,5
	CRN 3 AC PIANA EA OC 14 3I	150	15	17

I Cerniere in lega leggera verniciate nero raggrizzato di testa 1 ala superiore

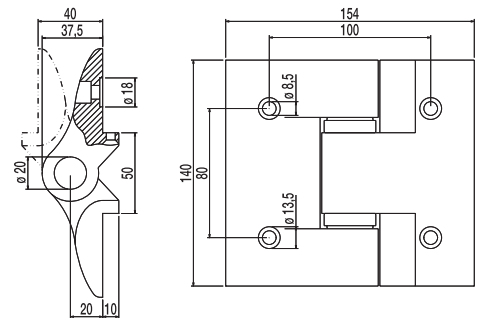
- UK Hinge head with one upper wing for carriage pin
- D Biegende 1 - Flügel Kopfscharniere mit Lager
- F Charnière supérieure à 1 côté pour passage axe de chariot
- E Bisagra superior redondeada en aleación de aluminio lacado negro mate
- RUS Петля верхняя одинарная для оси тележки - легкий сплав



Tipo Type	Articolo - Article		Portata Capacity		
	Riferimento - Reference		kg x1	N°	kg
	CRN 4 AC	EA OC 14 4S	150	15	9,8
	CRN 4 AC PIANA	EA OC 14 41	150	15	9,2

I Cerniere in lega leggera verniciate nero raggrizzato a 2 ali superiori, senza perno, per portoni a libro

- UK Hinge with two upper wings without pin
- D Biegende 2 - Flügel Scharniere oben ohne Bolzen Scharniere
- F Charnière supérieure à 2 côtés sans axe en aluminium noir opaque
- E Bisagra superior en aleación de aluminio lacado negro mate con 2 alas sin eje
- RUS Петля верхняя двойная без оси - легкий сплав



Tipo Type	Articolo - Article		Portata Capacity		
	Riferimento - Reference		kg x1	N°	kg
	CRN 5 AC	EA OC 14 5S	150	15	11,4
	CRN 5 AC PIANA	EA OC 14 51	150	15	11