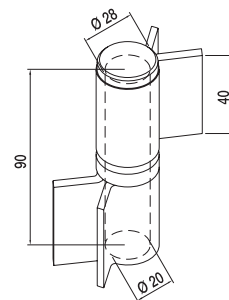




I Cerniera in ferro a saldare grezza a 2 ali aperte con perno sfilabile con rondella

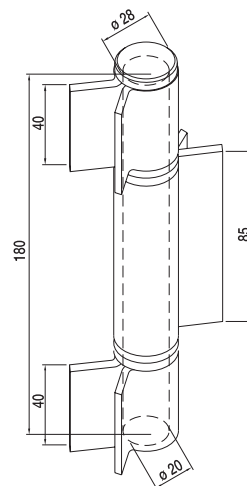
- UK Black iron 2 open wing hinge with removable pin and ring to be welded
 D Schwarze Eisen Scharniere 2 offen. Fluegel mit ausziehbar. Stifte und Ring zum schweißen
 F Charnière fer brut 2 volets ouverts pivot dégonnable à souder
 E Bisagra hierro negro 2 alas abiertas con pernio extraíble y anilla de seguridad para soldar
 RUS Петля черный металл с 2 открытыми площадками под сварку разъемная





Articolo - Article			
Riferimento - Reference	N°		
136	EG 00 90 20	8	4,2

I Cerniera in ferro a saldare grezza a 3 ali aperte con perno sfilabile con rondella grezza

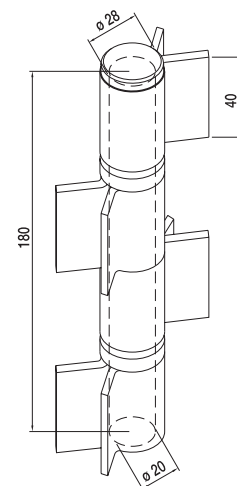
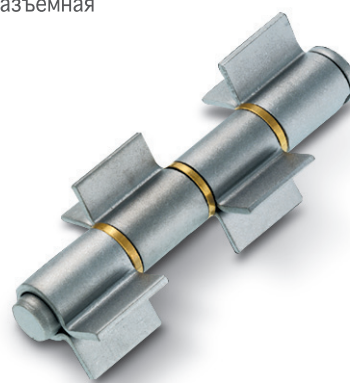
- UK Black iron 3 open wing hinge with removable pin and ring to be welded
 D Schwarze Eisen Scharniere 3 offen. Fluegel mit ausziehbar. Stifte und Ring zum schweißen
 F Charnière fer brut 3 volets ouverts pivot dégonnable à souder
 E Bisagra hierro negro 3 alas abiertas con pernio extraíble y anilla para soldar
 RUS Петля черный металл с 3 открытыми площадками под сварку разъемная





Articolo - Article			
Riferimento - Reference	N°		
137	EG 00 18 30	4	4,2

I Cerniera in ferro a saldare grezza a 4 ali aperte con perno sfilabile con rondella grezza

- UK Black iron 4 open wing hinge with removable pin and ring to be welded
 D Schwarze Eisen Scharniere 4 offen. Fluegel mit ausziehbar. Stifte und Ring zum schweißen
 F Charnière fer brut 4 volets ouverts pivot dégonnable à souder
 E Bisagra hierro negro 4 alas abiertas con pernio extraíble y anilla para soldar
 RUS Петля черный металл с 4 открытыми площадками под сварку разъемная



Articolo - Article			
Riferimento - Reference	N°		
138	EG 00 18 40	4	4,2