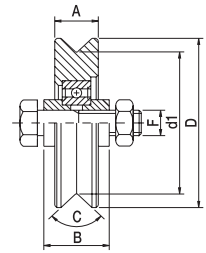


I Ruote normali a 1 cuscinetto - gola V per **ANGULA**

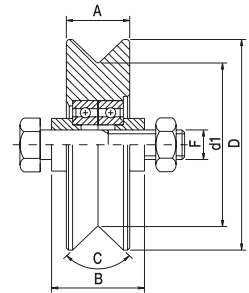
- UK Normal wheel with one bearing - V groove
- D Laufrollen mit einem Lager - V Nut
- F Roues normales avec 1 roulement - gorge V
- E Ruedas normales con 1 cojinete - guía V
- RUS Ролик нормальный с 1 подшипником паз V



Articolo - Article		D	d1	A	B	C	F	LxHxS	Portata Capacity	
Riferimento - Reference		\varnothing		mm		V	UNI	mm	x1	N°
820 VI	RI 80 20 V1	80	65	20	34	96°	M 14x70	80x40x3	140	20 14,2

I Ruote normali a 2 cuscinetti - gola V per **ANGULA**

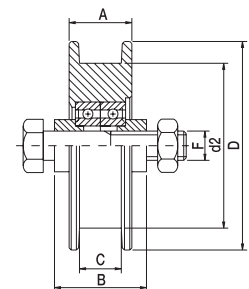
- UK Normal wheels with two bearings - V groove
- D Laufrollen mit zwei Lagern - V Nut
- F Roues normales avec 2 roulements - gorge V
- E Ruedas normales con 2 cojinetes - guía V
- RUS Ролик нормальный с 2 подшипниками паз V



Articolo - Article		D	d1	A	B	C	F	LxHxS	Portata Capacity	
Riferimento - Reference		\varnothing		mm		V	UNI	mm	x1	N°
1230 VI	RI 12 30 V2	120	100	30	44	96°	M 14x70	120x50x3	350	8 17,6
1630 VI	RI 16 30 V2	160	140	30	44	96°	M 14x70	160x50x3	440	4 17,3

I Ruote normali a 2 cuscinetti - gola U

- UK Normal wheels with two bearings - U groove
- D Laufrollen mit zwei Lagern - U Nut
- F Roues normales avec 2 roulements - gorge U
- E Ruedas normales con 2 cojinetes - guía U
- RUS Ролик нормальный с 2 подшипниками паз U



Articolo - Article		D	d2	A	B	C	F	LxHxS	Portata Capacity	
Riferimento - Reference		\varnothing		mm		U	UNI	mm	x1	N°
1230 UI	RI 12 30 U2	120	100	30	44	21	M 14x70	120x50x3	350	8 17,8
1630 UI	RI 16 30 U2	160	140	30	44	21	M 14x70	160x50x3	440	4 15,7

I Ruote normali a 2 cuscinetti - gola O per

UK Normal wheels with two bearings - O groove

D Laufrollen mit zwei Lagern - O Nut

F Roues normales avec 2 roulements - gorge O

E Ruedas normales con 2 cojinetes - guía O

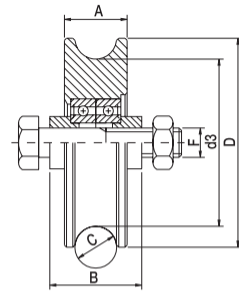
RUS Ролик нормальный с 2 подшипниками паз O

NEW OMEGA

NEW OMEGA 2

FLOOR

HEAVY



Articolo - Article		D	d3	A	B	C	F	LxHxS	Portata Capacity		
Riferimento - Reference		∅		mm		O	UNI	mm	Kg x1	N°	Kg
1230 OI	RI 12 30 02	120	100	30	44	21	M 14x70	120x50x3	350	8	17,1
1630 OI	RI 16 30 02	160	140	30	44	21	M 14x70	160x50x3	440	4	16,6