

I Guida superiore per portoni scorrevoli grezza - zincata

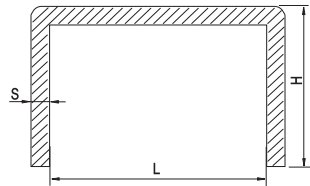
UK Special guide for sliding gates black or galvanised


D Schiene fuer Führungsrolle, roh oder verzinkt

F Guide supérieur pour porte coulissante - existe en noir et zingué

E Guía superior para portones correzidos non cincada y cincada

RUS Направляющая верхняя для сдвижных ворот
черная или оцинкованная



Articolo - Article		L	H	S	Descrizione Description	Fasci Sheafs	 Kg
Riferimento - Reference		mm				ML	Kg
58/40G	BG 42 35 00	42	3	35	Grezzo da ML 6	120	312
58/40Z	BZ 42 35 00	42	3	35	Zincato da ML 6	120	312
58/48G	BG 50 35 00	50	3	35	Grezzo da ML 6	120	340
58/48Z	BZ 50 35 00	50	3	35	Zincato da ML 6	120	340
58/60G	BG 62 40 00	62	3	35	Grezzo da ML 6	120	400
58/60Z	BZ 62 40 00	62	3	35	Zincato da ML 6	120	400
58/65G	BG 67 40 00	67	3	40	Grezzo da ML 6	120	420
58/65Z	BZ 67 40 00	67	3	40	Zincato da ML 6	120	420
58/70G	BG 72 40 00	72	3	40	Grezzo da ML 6	120	438
58/70Z	BZ 72 40 00	72	3	40	Zincato da ML 6	120	438
58/80G	BG 82 45 00	82	3	45	Grezzo da ML 6	120	480
58/80Z	BZ 82 45 00	82	3	45	Zincato da ML 6	120	480

I Supporto regolabile ad L per guide art. 58

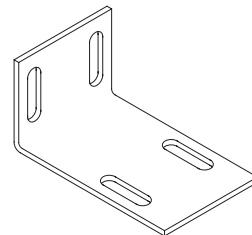
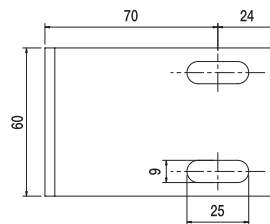
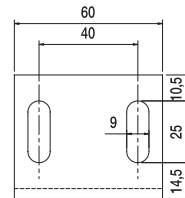
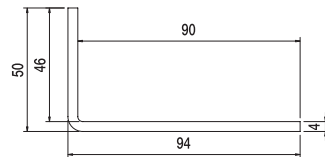
UK New support braket for art. 58 guide



D Winkelbefesigung fur art. 58 Schiene

F Support guide pour rail art. 58

E Escuadra a L para art. 58 guía

RUS Регулируемая опорная стойка для направляющей 58



Articolo - Article			
Riferimento - Reference		N°	
P 83	PT 50 94 00	10	2,3